

SECTION 6, T.7N., R.2E., S.L.B.& M.

IN WEBER COUNTY

SCALE 1" = 400'

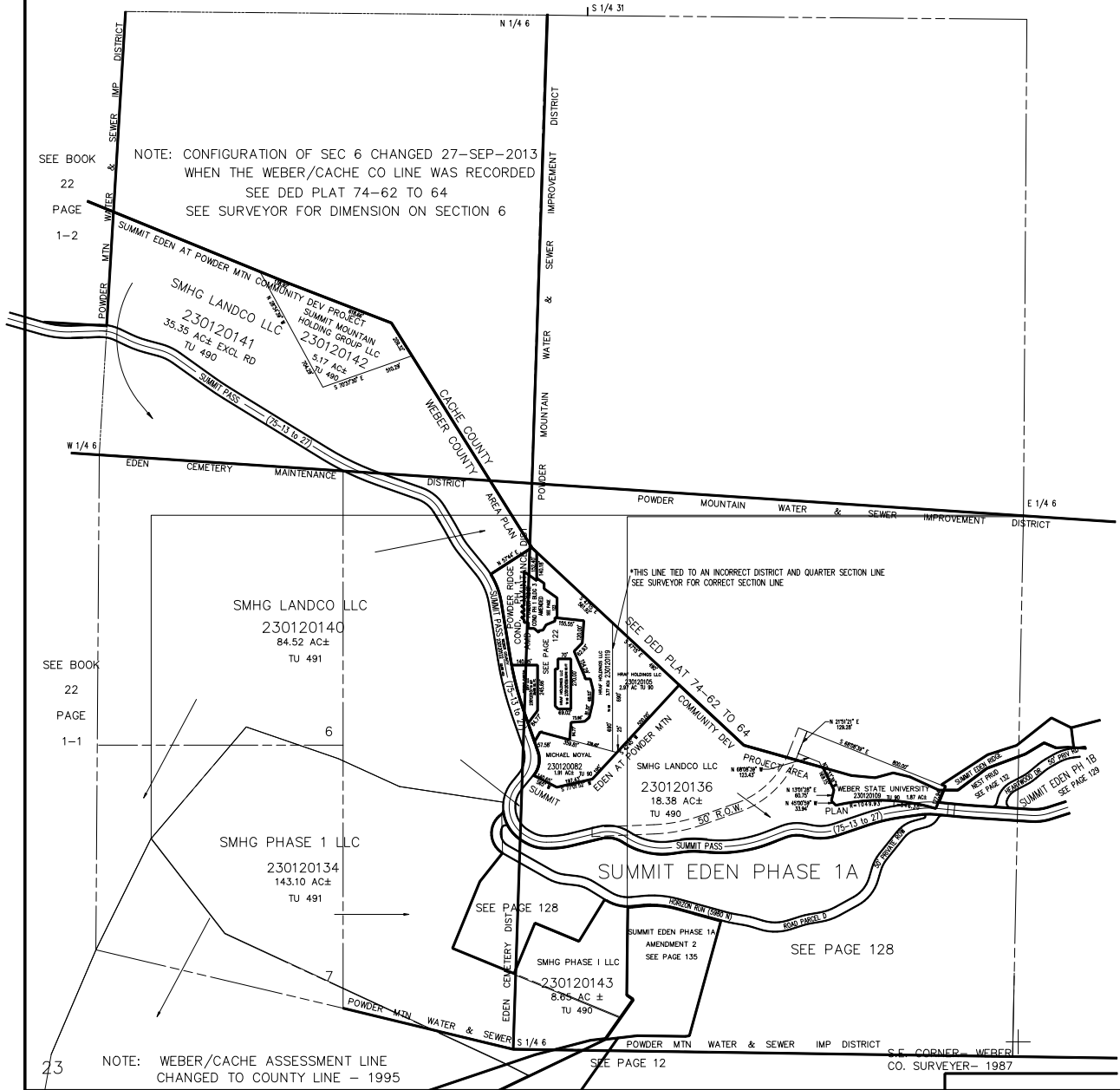
TAXING UNIT: 90, 227, 490, 491

SEE PAGE 45

ALSO SEE PAGES 12-2, 3

SEE BOOK
22
PAGE
1-2

NOTE: CONFIGURATION OF SEC 6 CHANGED 27-SEP-2013
WHEN THE WEBER/CACHE CO LINE WAS RECORDED
SEE DED PLAT 74-62 TO 64
SEE SURVEYOR FOR DIMENSION ON SECTION 6



SEE PAGE
12

SEE BOOK
22
PAGE
1-1

23

NOTE: WEBER/CACHE ASSESSMENT LINE
CHANGED TO COUNTY LINE - 1995

SEE PAGE 12

S.E. CORNER, WEBER
CO. SURVEYOR - 1987

BDB 2-96